



World Leader in Rating Technology

2018 ORC Club Certificate

Rating Office

Hungarian Yachting Association
Istvanmezei ut 1-3
H-1146 Budapest
HUNGARY



Certificate

Number **001/18**
Issued On **23/04/2018**
ORC Ref **HUN10013946**
VPP Ver. **2018 1.00**
Valid until **31/12/2018**

Crew Weight

Default 750kg
Maximum **500kg**
Minimum* **375kg**
**when applied by the NoR and SI*
Non Manual Pwr **No**

Special Scoring

	ToD	ToT
Non Spin GPH	572.2	1.0486
Non Spin OSN	561.8	1.0681

Sails Limitations

Headsails **6** Spinnakers **4**

Spinnaker configuration

Symmetric: **No**
Asymmetric: **Yes 121.33**
Flying H/S: **Yes 84.74**
Spin. Pole: **No**

Class Division Length

CDL = 10.462

Stability (Measured)

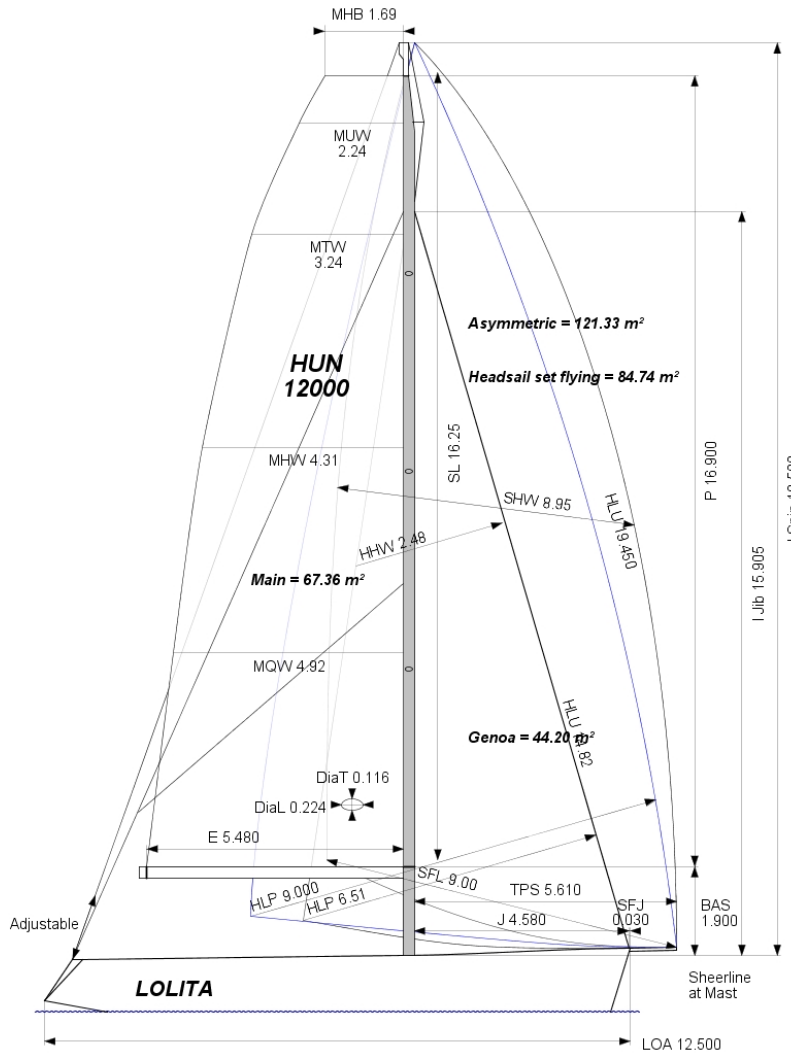
Limit Positive Stab.: **136.1°**
Stability Index: **132.4**

Owner

Simó Béla
8647 Balatonmáriafürdő,
Rákóczi u. 79
HUNGARY

I certify that I understand my responsibilities under ORC Rules and Regulations

Signature



BOAT	GPH	HULL
Name Lolita Sail Nr HUN-12000	540.8	Data File HUN12000 LOA 12.500m Offset File H3944.OFF MB 3.980m Displacement 5,142kg Draft 2.548m
CLASS Class ILC 40 Designer Judel / Vrolijk Builder Gemini Intenration Series 06/1996 Age Date 06/1996 Age Allowance 0.487%		IMS Division Performance Dynamic All. 0.000% Fwd Accom. No Construction Light Fiber Rigging No Aramid Core No Crew Arm Ex Carbon Rudder Yes Light Stanchions No
COMMENTS Changed to HUN in 2014 With original measurement data Serial No 21 SPL = 4.76		IMSL 10.927m VCGD -0.561m Sink 20.67kg/mm RL 9.996m VCGM -0.520m WS 26.76m² LSMO 10.620m Displacement/Length ratio 4.2930
PROPELLER Installation Strut PRD 0.480 Type Folding 2 blades PBW 0.123 PIPA 0.0036		Water Ballast 0 Trim Tab No BLR Index 0.0000
		CENTERBOARD N/A
SCORING OPTIONS		
	COASTAL / LONG DISTANCE	WINDWARD / LEEWARD
Time on Distance	535.3	608.7
Time on Time	1.1208	1.1088
Triple Number	Low Medium High	Low Medium High
Time on Distance	595.4 488.4 437.8	782.0 611.4 542.6
Time on Time	1.1336 1.3821 1.5419	0.8632 1.1041 1.2440



World Leader in Rating Technology

2018

ORC Club Certificate Appendix

BOAT		Certificate Number 001/18	
Name	Lolita	Issued On	23/04/2018
Sail Nr	HUN-12000		

TIME ALLOWANCES							
Wind Velocity	6 kt	8 kt	10 kt	12 kt	14 kt	16 kt	20 kt
Beat VMG	859.2	747.9	692.2	667.9	655.2	649.4	639.7
52°	548.7	491.1	469.9	460.3	455.1	452.1	445.2
60°	508.2	469.0	454.1	444.6	438.6	434.7	426.2
75°	477.7	448.1	432.4	421.4	411.6	405.3	397.5
90°	470.7	437.9	416.1	402.2	391.1	379.2	366.1
110°	493.5	453.3	425.4	392.9	373.0	354.0	328.0
120°	541.3	464.9	428.6	397.0	367.9	347.3	312.1
135°	614.4	497.7	450.7	417.7	385.1	352.9	292.4
150°	733.1	583.9	496.1	453.6	426.3	399.8	336.5
Run VMG	846.5	674.2	572.9	521.8	488.5	453.8	388.5
Selected Courses							
Windward / Leeward	852.8	711.1	632.6	594.8	571.8	551.6	514.1
Circular Random	719.6	593.0	526.8	488.6	463.8	445.4	416.2
Coastal / Long Distance	852.2	666.6	568.9	513.1	478.8	448.5	394.3
Non Spinnaker	784.3	635.3	555.7	509.1	479.6	459.1	430.0

Velocity Prediction in Knots for True Wind Speeds							
Wind Velocity	6 kt	8 kt	10 kt	12 kt	14 kt	16 kt	20 kt
Beat Angles	45.0°	43.5°	41.7°	40.8°	40.2°	39.9°	40.0°
Beat VMG	4.19	4.81	5.20	5.39	5.49	5.54	5.63
52°	6.56	7.33	7.66	7.82	7.91	7.96	8.09
60°	7.08	7.68	7.93	8.10	8.21	8.28	8.45
75°	7.54	8.03	8.32	8.54	8.75	8.88	9.06
90°	7.65	8.22	8.65	8.95	9.21	9.49	9.83
110°	7.30	7.94	8.46	9.16	9.65	10.17	10.97
120°	6.65	7.74	8.40	9.07	9.78	10.36	11.54
135°	5.86	7.23	7.99	8.62	9.35	10.20	12.31
150°	4.91	6.17	7.26	7.94	8.44	9.01	10.70
Run VMG	4.25	5.34	6.28	6.90	7.37	7.93	9.27
Gybe Angles	142.5°	144.5°	150.2°	152.4°	163.6°	178.9°	143.7°